

Lands Now or Formerly
US SALT CORPORATION
Book 314 Page 44
(PARCEL D)
Tax Map ID 43.00-1-1

WETLAND W5
AREA=9,947±SQ.FT.
OR: 0.23±ACRES

WETLAND W14
AREA=11,096±SQ.FT.
OR: 0.25±ACRES

Lands To Be Conveyed
Lands Now or Formerly of
SENECA LAKE STORAGE, LLC
Book 322 Page 99
Tax Map ID 43.00-1-16

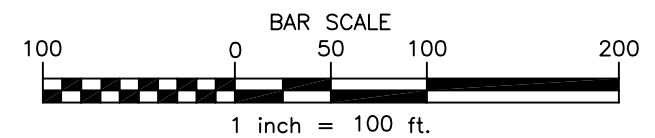
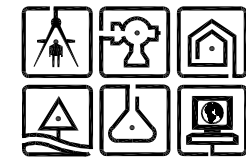
STREAM S5

EAST BRINE POND

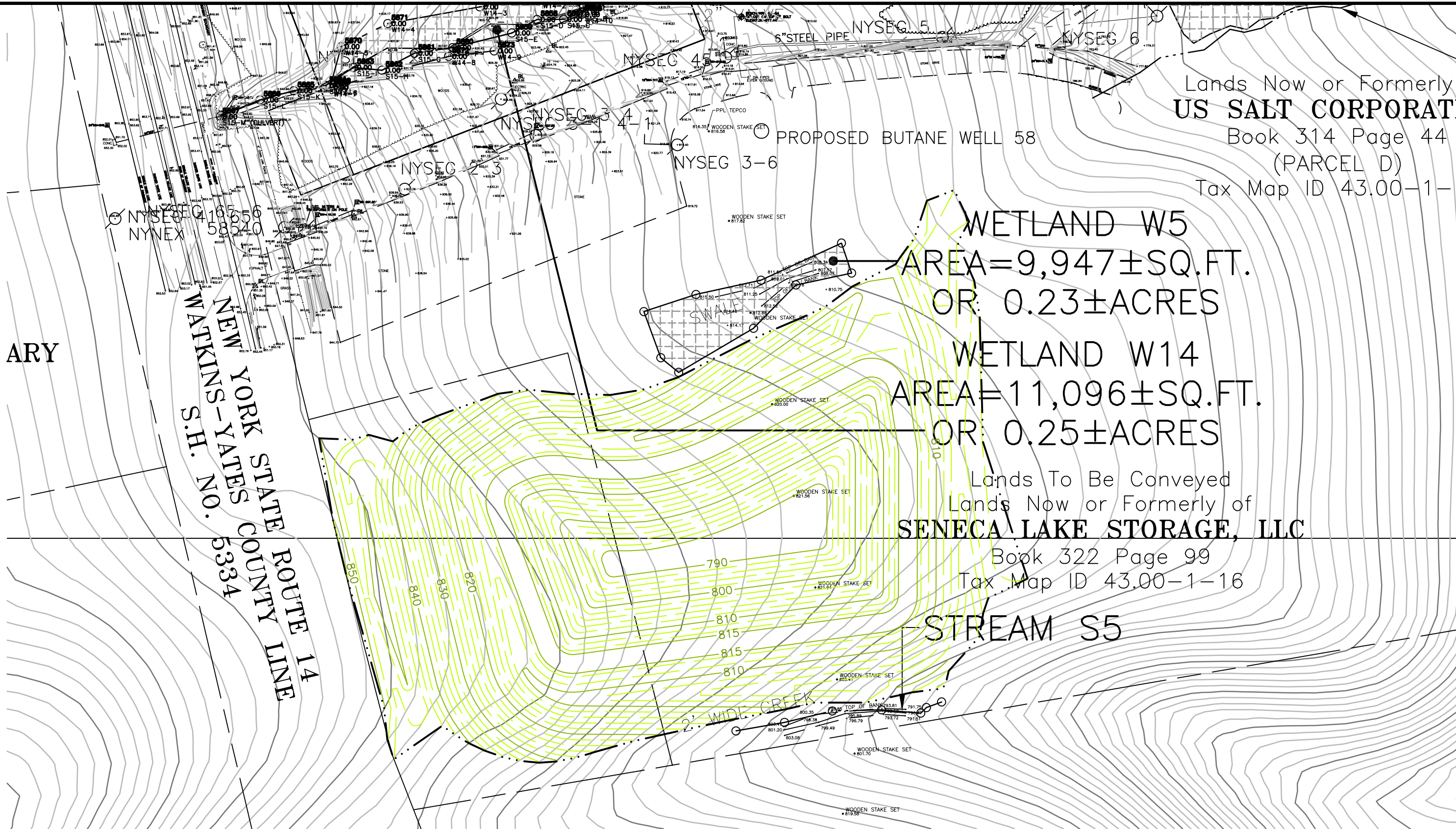
JAN. 17, 2012

C.T. MALE ASSOCIATES
Engineering, Surveying, Architecture & Landscape Architecture, P.C.

50 CENTURY HILL DRIVE, LATHAM, NY 12110
518.786.7400 * FAX 518.786.7299



- APPROXIMATELY 171,586 BARRELS WITH 3' OF FREEBOARD.
- LIMIT OF DISTURBANCE APPROXIMATELY 6.18 ACRES.
- TOTAL POND SIZE APPROXIMATELY 1.8 ACRES.



"The data and drawings contained on this disk are the copyrighted result of work prepared under direction of Registered/Licensed professional employees of C.T. Male Associates, P.C. As a service to our clients, we provide this information under the following conditions:

1. Proper credit shall be given to C.T. Male Associates, whenever this data, or portions thereof, are reproduced.
2. Use of this data by anyone other than the Client for which it was prepared is prohibited by copyright law unless authorized in writing by C.T. Male Associates, P.C.
3. C.T. Male Associates, P.C. is hereby indemnified from all claims resulting from any unauthorized modification of the data and/or drawings contained hereon.
4. Survey drawings meet appropriate accuracy standards only at the scale at which the hard copies were provided. Any enlargement of the hard copies will decrease its accuracy.

"ONLY COPIES OF THIS MAP SIGNED IN RED INK AND EMBOSSED WITH THE SEAL OF AN OFFICER OF C.T. MALE ASSOCIATES, P.C. OR A DESIGNATED REPRESENTATIVE SHALL BE CONSIDERED TO BE A VALID TRUE COPY".